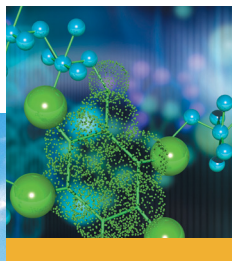


MINNESOTA

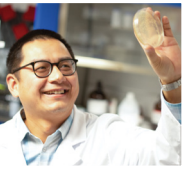
the Global Epicenter of Health,
Well-Being, Innovation and Care



star of the north ™



The Global Epicenter of Health, Well-Being, Innovation and Care!



Here's the truth: **If you want to be a leader in life-sciences, you want to be in Minnesota.**

We have:

- The top health tech cluster in the world;
- Among the most Fortune 500 companies per capita in the U.S.;
- Medical Alley, a network of over 800 healthcare leaders;
- A globalized economy – 900 foreign-owned companies from 40 countries have outposts in Minnesota.

In Minnesota, you'll be as connected as you could ever hope to be: To your customers. To industry leaders who can help you grow. To supply chains. To infrastructure. To R&D. To a culture of innovation and excellence. To an educated and driven workforce, ready to work. To entrepreneurship and to a concentration of unique expertise you won't find anywhere.

We're in the Midwest, but we're also in the middle of everything!

Invest . Locate . Grow

MINNESOTA

star of
the north*

MINNESOTA

- ⊕ **Home to Medical Alley**, a network of over 800 healthcare industry organizations
- 🔬 **Home to research powerhouses** such as the Mayo Clinic, University of Minnesota, Hormel Institute & many others
- 💰 **Lower cost of doing business and living** than the U.S. average and significantly lower than many major metropolitan areas
- 💧 **Abundant, clean, affordable** water supply
- 🏡 **Ample available land and real estate** to expand and grow
- 🌐 **> 900 foreign-owned companies**
- 🎓 **45% of population with Bachelor's Degree**, compared to 35% US average





STATE OF MINNESOTA

EMPLOYMENT AND ECONOMIC DEVELOPMENT

The Minnesota Department of Employment and Economic Development (DEED) is the state's principal economic development agency.

DEED programs promote business recruitment, expansion, and retention; international trade; workforce development; and community development.

MINNESOTA PARTNERS





DMC

Destination Medical Center
Rochester, MN



Destination Medical Center (DMC) is a unique 20-year economic development initiative. The \$5.6 billion plan is the largest in Minnesota's history. With the expansion of Mayo Clinic and DMC growth, Rochester is a global destination for health and wellness and so much more. DMC promotes the City of Rochester, and more broadly, the County, and the State as a world destination medical center, to assist the patients, caregivers, residents, employees, and visitors in fully experiencing Rochester as a premier destination medical center, while providing extended economic development and opportunities for the City, the region, and the State.

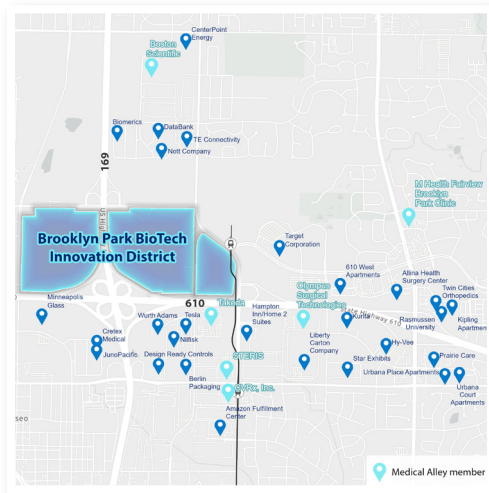
DESTINATION MEDICAL CENTER

www.dmc.mn

Michael Flynn, Sr Director of Economic Development

Email: michaelflynn@dmceda.org

Brooklyn Park



With a population of more than 86,000 people and 30,000 jobs, Brooklyn Park is the sixth-largest city in Minnesota and the fourth largest in the metropolitan area. We are a community that believes our residents are our strongest asset and the key to making Brooklyn Park thrive and prosper.

With a diverse metropolitan suburb boasting a population of nearly 90,000 residents, Brooklyn Park is the perfect place for a vibrant BioTech Innovation District. The District is estimated to generate 10,000 new jobs and 3,000 additional housing units, playing a crucial role in addressing workforce disparities that disproportionately impact Black, Indigenous, and People of Color (BIPOC) in Brooklyn Park and beyond.

CITY OF BROOKLYN PARK

www.brooklynpark.org

Michelle Basham, Director, Economic Development and Housing

Email: michelle.basham@brooklynpark.org



Discovery Square in Rochester, Minnesota is a 16 block sub-district built in collaboration with Mayo Clinic in a highly connected urban life science hub. Developed by entrepreneurs for entrepreneurs, the startup ecosystem of Discovery Square is designed to equip and encourage aspiring innovators from idea to exit.

Bringing together those passionately pursuing the future of healthcare with Mayo Clinic doctors, researchers and scientists.

One and Two Discovery Square are the epicenter of what's next in healthcare. Here, visionary start-ups, researchers, educators and companies collaborate with the esteemed Mayo Clinic and one another to advance biomedical technology and treatments of tomorrow.

When you locate at One or Two Discovery Square, you will be in the heart of Destination Medical Center's Discovery Square District. Destination Medical Center is a 20-year, \$5.6 billion economic development engine creating a global destination for health and wellness with Mayo Clinic and innovation at its core. You will be steps from Mayo Clinic's 1.5 million square feet of research and lab space, with access to Mayo Clinic core services and Mayo Clinic Ventures, which can help advance your intellectual property and business.

DISCOVERY SQUARE

<https://dmc.mn/discovery-square>

R. Brent Webb, Development Executive

Email: Brent.Webb@mortenson.com



Great River Energy is a not-for-profit wholesale electric power cooperative serving 27 member-owner distribution cooperatives throughout Minnesota. Together, our systems provide reliable, cleaner electricity while maintaining affordable rates for 1.7 million people.

We're ingrained in the communities we power, always serving people over profits. And we're generating innovation to shape the future of energy in a way only cooperatives can.

GREAT RIVER ENERGY

<https://greatriverenergy.com>

Erin Sparks, Economic Development Lead

Email: ESparks@GREnergy.com

GREATER MSP[®]

Minneapolis Saint Paul Regional Economic Development Partnership



Welcome to the Greater MSP region, consistently ranked among the best places to do business in the United States. Here, you'll find everything your business needs to prosper: A diverse and highly educated workforce, a thriving community and a network of some of the world's biggest, most respected companies.

GREATER MSP

www.greatersp.org

Amanda Taylor, Vice President, Business Investment

Email: Amanda.Taylor@greatersp.org

Morgan Hill, Director, Business Investment

Email: Morgan.Hill@greatersp.org



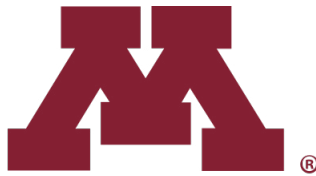
University of Minnesota Foundation Real Estate Advisors (UMFREA) is a subsidiary of the University of Minnesota Foundation that supports building greatness at the University through three real estate functions: investment in communities, property management, and real estate development. UMFREA's current project, The Minnesota Innovation Exchange or "The MIX," will bring together innovators from industry, academia, and the community to develop solutions that make life better for all. The MIX is adjacent to the University of Minnesota, a top-tier research institution in the heart of the thriving metro area of Minneapolis/St. Paul and a key driver of the area's burgeoning innovation ecosystem.

THE MINNESOTA INNOVATION EXCHANGE

TheMIXMN.com

Patrick Mascia, Managing Director

Email: patmascia@umfrea.org



UNIVERSITY OF MINNESOTA

Driven to DiscoverSM

At the University of Minnesota Twin Cities, we seek new knowledge that can change how we all work and live. We prepare students to meet the great challenges facing our state, our nation, and our world. And we apply our expertise as students, faculty, and staff to engage with communities across Minnesota.

Bringing people together in new ways, fostering discoveries, and making our world a better place is what we do at the University of Minnesota. And we've been doing it for more than 150 years.

Our world-class faculty are known for life-changing inventions such as the pacemaker, the retractable seat belt, cancer therapies, biodegradable plastics, and technologies that advance agricultural production.



UNIVERSITY OF MINNESOTA

www.umn.edu

Corporate Engagement Center

cec.umn.edu

Gabrielle Bunten-Spoto, Corporate Relations Associate

Email: rbunt0051@umn.edu



MINNESOTA EXHIBITING COMPANIES





Lifecore Biomedical is a fully integrated contract development and manufacturing organization (CDMO) that offers highly differentiated capabilities in the development, fill and finish of complex sterile injectable pharmaceutical products in syringes, vials, and cartridges. As a leading manufacturer of premium, injectable grade Hyaluronic Acid, Lifecore brings more than 40 years of expertise as a partner for global and emerging biopharmaceutical and biotechnology companies across multiple therapeutic categories to bring their innovations to market. For more information, visit lifecore.com.

LIFECORE BIOMEDICAL

lifecore.com

Darren Hieber, SVP of Corporate Development and Partnerships

Email: darren.hieber@lifecore.com



Microbiologics has been creating confidence in science for more than 50 years. We're the world's leading experts in biological products and services, focused on protecting the health and safety of people around the world. We partner with healthcare and life science laboratories, manufacturers and suppliers across the globe to co-create and provide biological reference materials, assay services and consulting for microbiology, molecular diagnostics, and virology.

MICROBIOLOGICS

microbiologics.com

Karin Pauly, Director of New Market Development

Email: kpauly@microbiologics.com



MinneBio

Established in December 2018, **MinneBio** has evolved into a sustainable supplier in biotechnology, specializing in enzymes such as ultra-active nuclease (Benzonase), proteinase K, and cytokines like human interleukins-2, 6, 10, 12, 15, and cell culture media. Our products serve academic research, therapeutic trials, and pharmaceutical development, ensuring reliability and quality. Committed to customer satisfaction, we offer the best solutions with our advanced platform for peptides, proteins, and antibodies, tailored to meet specific customer requirements. At MinneBio, we prioritize customer needs by actively listening and delivering exceptional products and services.

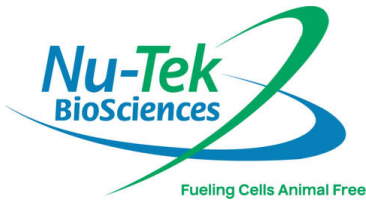
MINNEBIO

www.minnebio.com

David Liang, CEO

Email: david.liang@minnebio.com

MINNESOTA EXHIBITING COMPANIES



Nu-Tek BioSciences develops and manufactures peptones and protein hydrolysates for industry leading biotechnology and pharmaceutical companies. Nu-Tek is an industry leading solutions-based manufacturer delivering superior customer service and performance improving cell nutrition. The Company's products are used in a variety of applications ranging from mammalian cell culture to industrial fermentation.

Nu-Tek BioSciences

www.nu-tekbiosciences.com

Chris Wiedel, Chief Business Officer

Email: sales@nu-tekbioscience.com



To fundamentally transform the treatment of luminal diseases using proven immune-privileged regenerative biomaterials, delivered by minimally invasive proprietary bio-implant technologies.

PEYTANT SOLUTIONS, INC.

peytant.com

John Schorgl, CEO

Email: johns@peytant.com



PhD Technology, a leading high-pressure homogenizer manufacturer in Minnesota, USA, offers innovative solutions globally. Specializing in pharmaceuticals, biotechnology, and fine chemicals,

our high-pressure homogenizers achieve nano-scale homogenization and cell disruption efficiently, with pressures up to 30,000 psi. Customizable for various scales, they ensure uniform dispersion and temperature control. They provide a wide range of equipment and services tailored to customer needs, including nano emulsions, particle size reductions, and lipid nanoparticles. With specialized engineering support, exceptional service and quality are guaranteed.

PHD TECHNOLOGY

www.phdnanotech.com

Amy Thomas, Owner & Business Development Manager

Email: amy@phdnanotech.com

Colton Harrison, Owner & Business Development Manager

Email: colton@phdnanotech.com



RION, established out of the Mayo Clinic Employee Entrepreneurial Program, is a clinical-stage regenerative medicine company based in Rochester, MN. With a commitment to changing the approach to regenerative medicine, the company has isolated, from platelets, a unique exosome phenotype that is the key to tissue regeneration in the body. Rion has named these specialized platelets: Purified Exosome Product or PEP™. PEP™ was discovered at the Mayo Clinic Van Cleave Cardiac Regenerative Medicine Program. RION has advanced this technology by building a proprietary platform focused on defining PEP's mode of action, scaled exosome manufacturing and therapeutic applications.

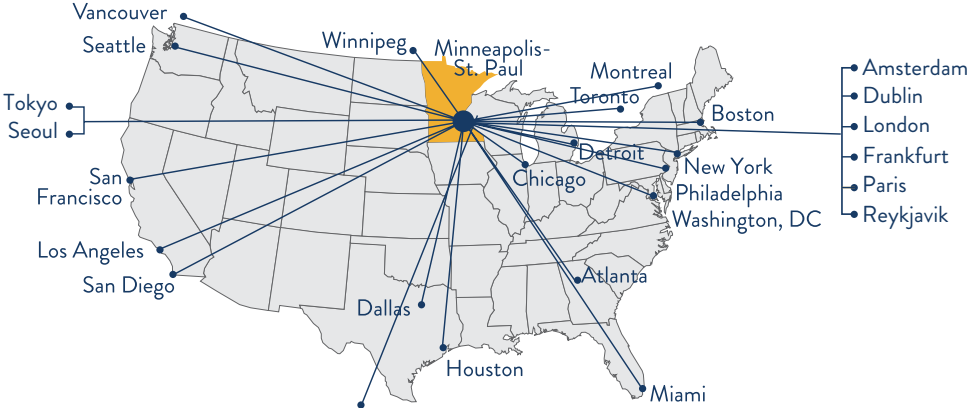
RION INC

www.riontx.com

Scott Rosenow, Chief Administrative Officer
Email: info@riontx.com

MINNESOTA

ALMOST 160 NONSTOP FLIGHTS FROM MSP



**AIRPORT
6 TIMES
IN 7 YEARS**



**GREAT LAKES
PORT**
(DRY BULK)



**STATE FOR
INFRASTRUCTURE**



You'll be in Good Company

MINNESOTA

boragroup



UPSHER-SMITH

solventum



ECOLAB®

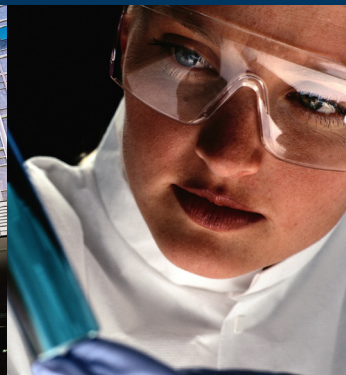
3M



Boston
Scientific
Advancing science for life™

Medtronic
Further.Together

- ANI
 - Aldevron/Danaher
 - Bio-Techne
 - DiaSorin
 - Ferring/Rebiotix
 - Lifecore Biomedical
 - Kindeva
 - Microbiologics
 - NMDP (National Marrow Donor Program)
 - Nu-Tek BioSciences
 - Sanofi
 - Silk Road Medical
 - United Therapeutics
 - Wilson Wolf
- And many more...*



Invest . Locate . Grow

MINNESOTA

star of
the north*

