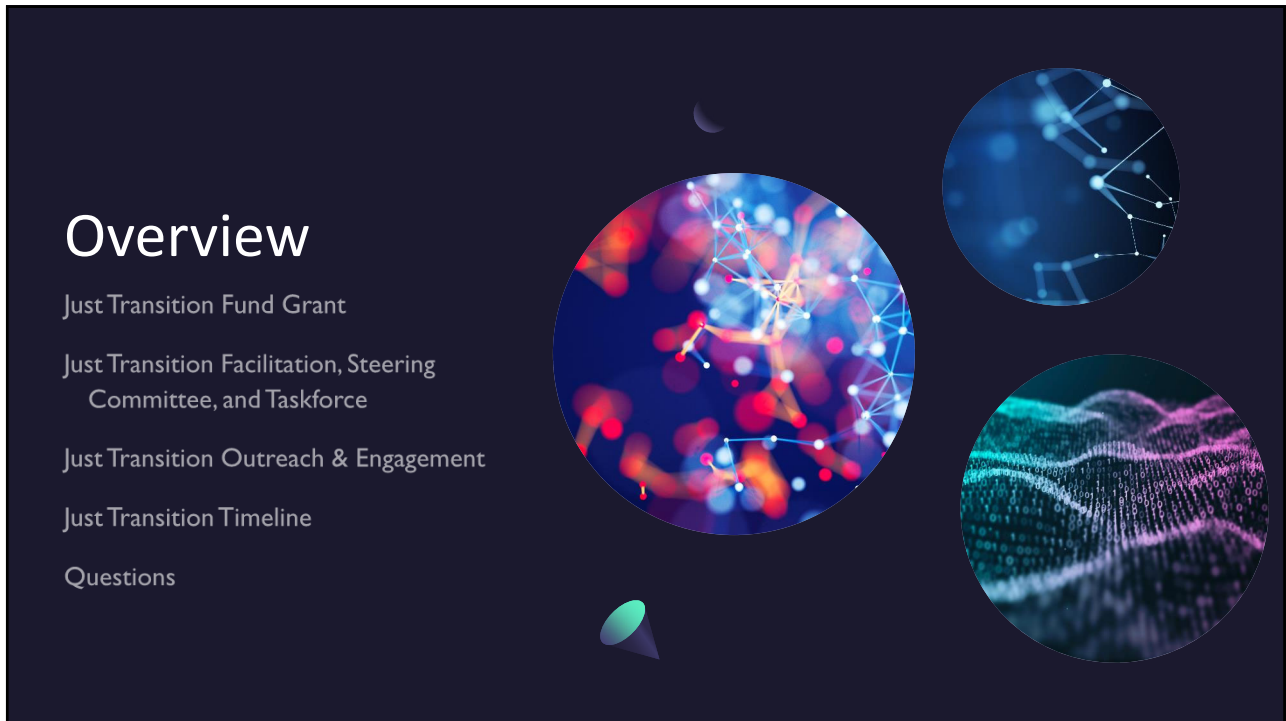


1



2

Just Transition Fund Grant

\$150,000 Awarded



Convene a year-long just transition process for Itasca County, and for the greater northern Minnesota region.

Develop an action plan to ensure a thriving economy, supported by an informed community, as we work through our energy transition.

The action plan will include a community-driven just transition vision and series of recommended pathways or actions that will allow the region to collaboratively identify and pursue federal funding and other resources in alignment with its vision.

3

Just Transition: Facilitation, Steering Committee, and Taskforce

FACILITATION

- IEDC, applicant and administrator
- Northspan, facilitation and organization
- Great Plains Institute (GPI), facilitator and industry expert
- Century on Energy and Environment (CEE), facilitator and industry expert

STEERING COMMITTEE

- Itasca County
- City of Cohasset
- MN Power, ALLETE
- Leech Lake Band of Ojibwe
- Iron Range Resources & Rehabilitation
- Itasca Economic Development Corp.

TASKFORCE

- Steering Committee
- 20-25 Individuals
- Targeting: education, community members, students, business owners/operators, tribal, workforce, mining, forestry, environmental, government, labor, business support, etc.

4

Steering Committee

What innovative, substantial actions, could we take to move us toward a just transition?

COMMUNITY INVESTMENT FOR THE FUTURE SUSTAINABLE ENERGY SHIFT

JUST TRANSITION ACTION PRIORITIES
Steering Committee | 08.23.23

What innovative, substantial actions could we take to move us toward a just transition?

	Storytelling	Welcoming	Growing	Innovating	Facilitating
<p>RATIONAL AIM Enable the group to create clearly focused yet innovative and empowering strategies that set the course.</p> <p>EXPERIENTIAL AIM Generate excitement about collaboration within the group and new commitment to practical possibilities.</p>	<ul style="list-style-type: none"> • Communication and messaging • Collective lobbying • Innovative outreach and community strategy • Develop collective partnership across communities • Communicate to your audiences, they may look different • Better framing of issue of the problem in context or rural versus urban, example: losing X jobs = this % of kids in school in rural versus urban • Better frame and context the rural impact story compared to urban • More shared community updates • Collaborative economic development • Shared understanding of the global issue • Build political will across city and county lines • Trust = Consistency & Transparency 	<ul style="list-style-type: none"> • Engage and welcome growing populations and businesses • Engage in more welcoming efforts • Invest to become a cultural hot spot and vibrant community • Invest in destination type entrepreneurship, "marketplace" • Triage 2, 3, 4, and 5! 	<ul style="list-style-type: none"> • Site readiness for businesses and homes • Amplify and help to move forward Cohasset's top 3 tax impact priorities • Targeted industry recruiting • Cohasset (coal host) has site(s) ready now! Shovel ready! • Investment across the board, housing, spec buildings, industrial park • Cannabis center point of MN 	<ul style="list-style-type: none"> • Add 4th T, technology • Innovator hubs • Broadband 	<ul style="list-style-type: none"> • Grant writing and reporting support • Communicate to funders they should increase priority to coal impacted host communities

5

“Success is 20% skills and 80% strategy. You might know how to succeed, but more importantly, what’s your plan to succeed?”

Jim Rohn



6

Outreach & Engagement

STEERING COMMITTEE

- 5 Steering Committee Meetings
- 5 Taskforce Meetings
- Oct 2023 – Dec 2024
- Attend Town Halls
- Attend Summit in November

TASKFORCE

- 5 in person meetings
- 3 hours each
- Feb – Nov
- Attend Summit in November

COMMUNITY TOWNHALL

- May Series – 6 Townhalls
- Oct Series – 6 Townhalls
- Community Surveys

7

Timeline 2024



8

Summit 2024

- November 2024
- Energy Transition Track
- Strategic Business & Community Development



9



Questions?

Tamara Lowney, IEDC, tlowney@itascadv.org, 218-242-0572

Elissa Hansen, Northspan, ehansen@northspan.org, 218-481-7737

10