



pcsforpeople



# PCs for People

Sustainable Digital Equity



**Susan Miller**

New Markets Manager

[susanmiller@pcsforpeople.org](mailto:susanmiller@pcsforpeople.org)

**Casey Sorensen**

CEO

[csorensen@pcsforpeople.org](mailto:csorensen@pcsforpeople.org)

612-567-8435

give



help



save





give



help



save



# Our Story - 2008



Responsible™  
Recycling



give



help



save



# Our Story - Demand for Tech



give



help



save



Source



From Donations to ITAD Service Provider

We now work with 6,000+ Companies - Sustainable, Scalable Solution



Responsible™  
Recycling



Source



We Accept Everything

give



help



save



# Source - Impact

## Workforce Development

- Disabilities - 20% of staff with
- County - Transitional worksite
- Re-entry – Training programs
- Youth - High school/College

Interns

## Environment

- E-waste Problem
- 6+ Million Pounds per year

## Sustainability

- Surplus, eBay, Wholesale

give



help



save



Refurbish



**Microsoft**  
AUTHORIZED  
Refurbisher

A Computer Factory - desktops, laptops, tablets

give



help



save





# Distribute - Retail

Computers  
Internet  
Repair  
Training

- Non-traditional Retail
- 300 customers per day
- 200% FPL
- Family size 3.2 with \$18,000 annual income
- 58% unemployment

give



help



save



# Distribute – PCs for Kids



Large Scale - Up to 400 Families

# Curbside COVID-19 Safe



Our Truck

Schools – Food, Computer or Both

give



help

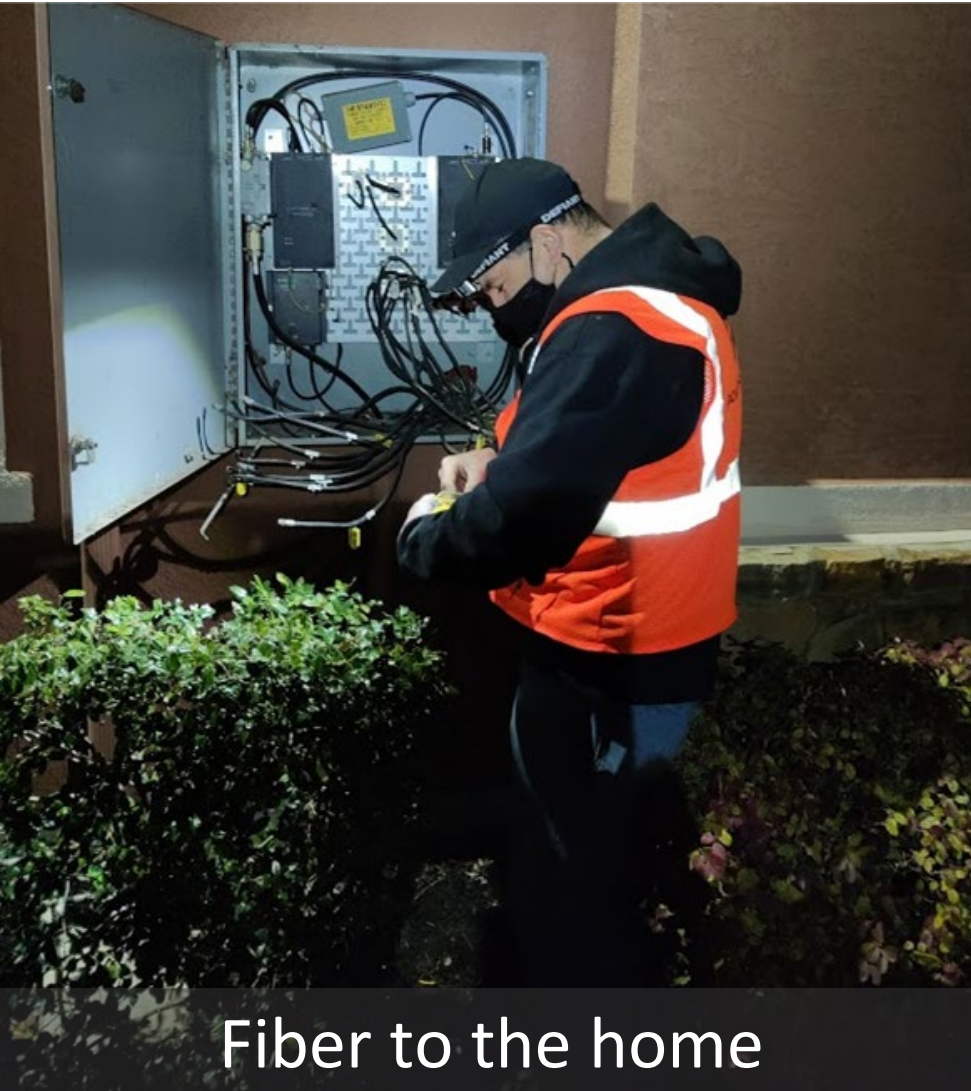


save





# Mobile Hotspots - Building Low Cost Networks - ISP Partnerships



Fiber to the home



Urban and Rural 5G

give



help



save



# Support



Training: From Digital Literacy and A+ Certs to Financial Literacy  
Help desk: 1,800 calls per day  
Support: One-on-one Support  
Warranty and repair - We repair thousands of computers each year

give



help



save



# 10 Locations - National Capacity



**EST. 1998  
MINNESOTA**

3 Locations  
44,000 sqft



**EST. 2015  
COLORADO**

2 Locations  
21,000 sqft



**EST. 2017  
OHIO**

2 Locations  
18,000 sqft



**JUNE 2020  
MARYLAND**

1 Location  
20,000 sqft



**JUNE 2020  
MISSOURI**

1 Location  
40,000 sq ft



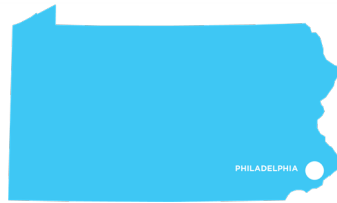
**November 2020  
Illinois**

2 Locations  
100,000 sq ft



**November 2021  
Georgia**

1 Locations  
20,000 sq ft



**June 2023  
Pennsylvania**

1 Locations  
2,000 sq ft



180 Staff and 260,000 Sq. ft.

give



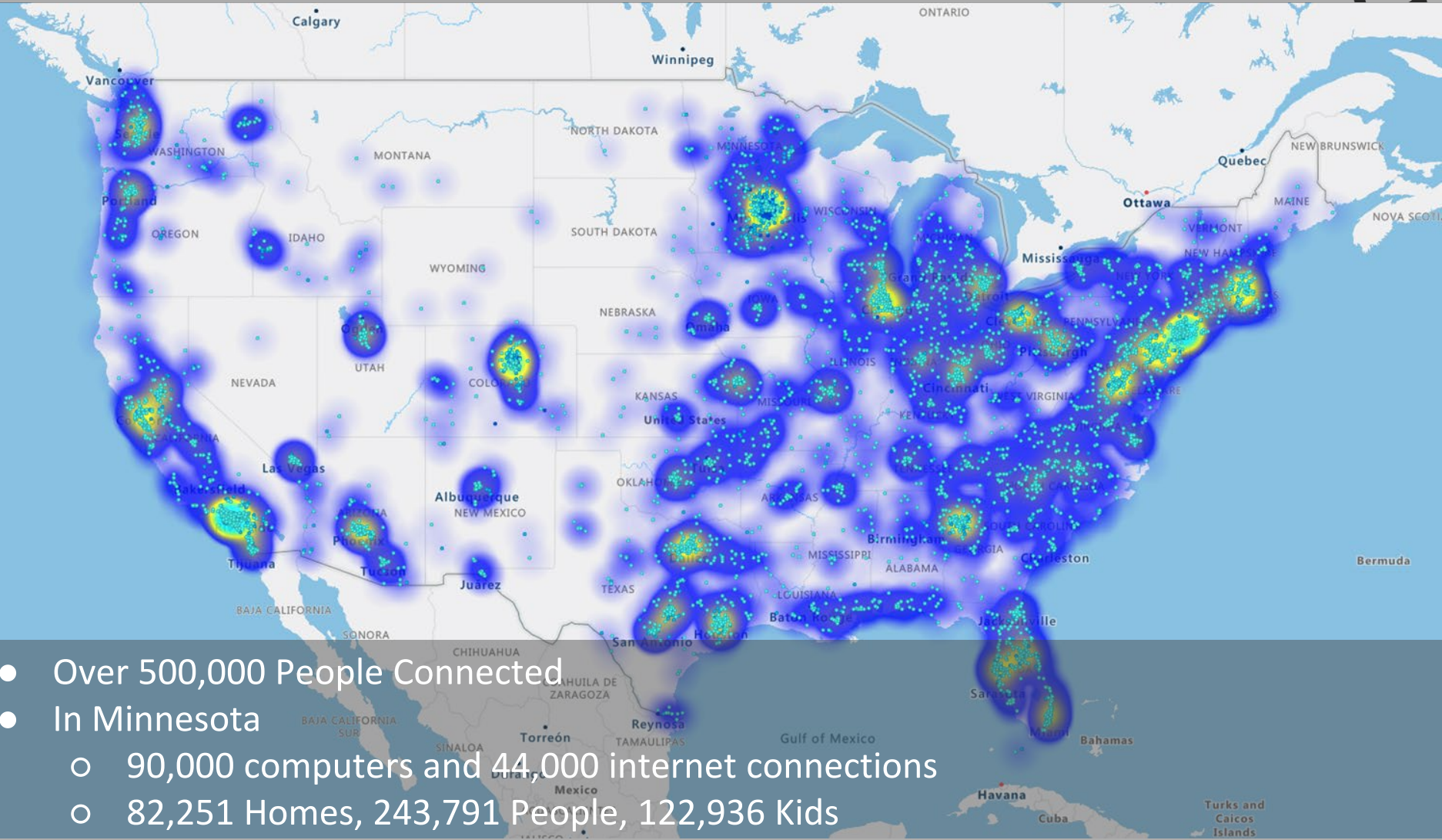
help



save



# Distribute - Impact Map



- Over 500,000 People Connected
- In Minnesota
  - 90,000 computers and 44,000 internet connections
  - 82,251 Homes, 243,791 People, 122,936 Kids
- Exciting Future: MNSCU 15,000 laptops, Supply and Ongoing need (MN 2024: for 40% it is still their first ever home computer)

give



help



save





# Questions?



[csorensen@pcsforpeople.org](mailto:csorensen@pcsforpeople.org)



[pcsforpeople.org](http://pcsforpeople.org)



[fb.me/pcsforpeople](https://fb.me/pcsforpeople)



[@pcsforpeople](https://twitter.com/pcsforpeople)



[linkd.in/1vJZMtF](https://linkd.in/1vJZMtF)

give



help



save

