

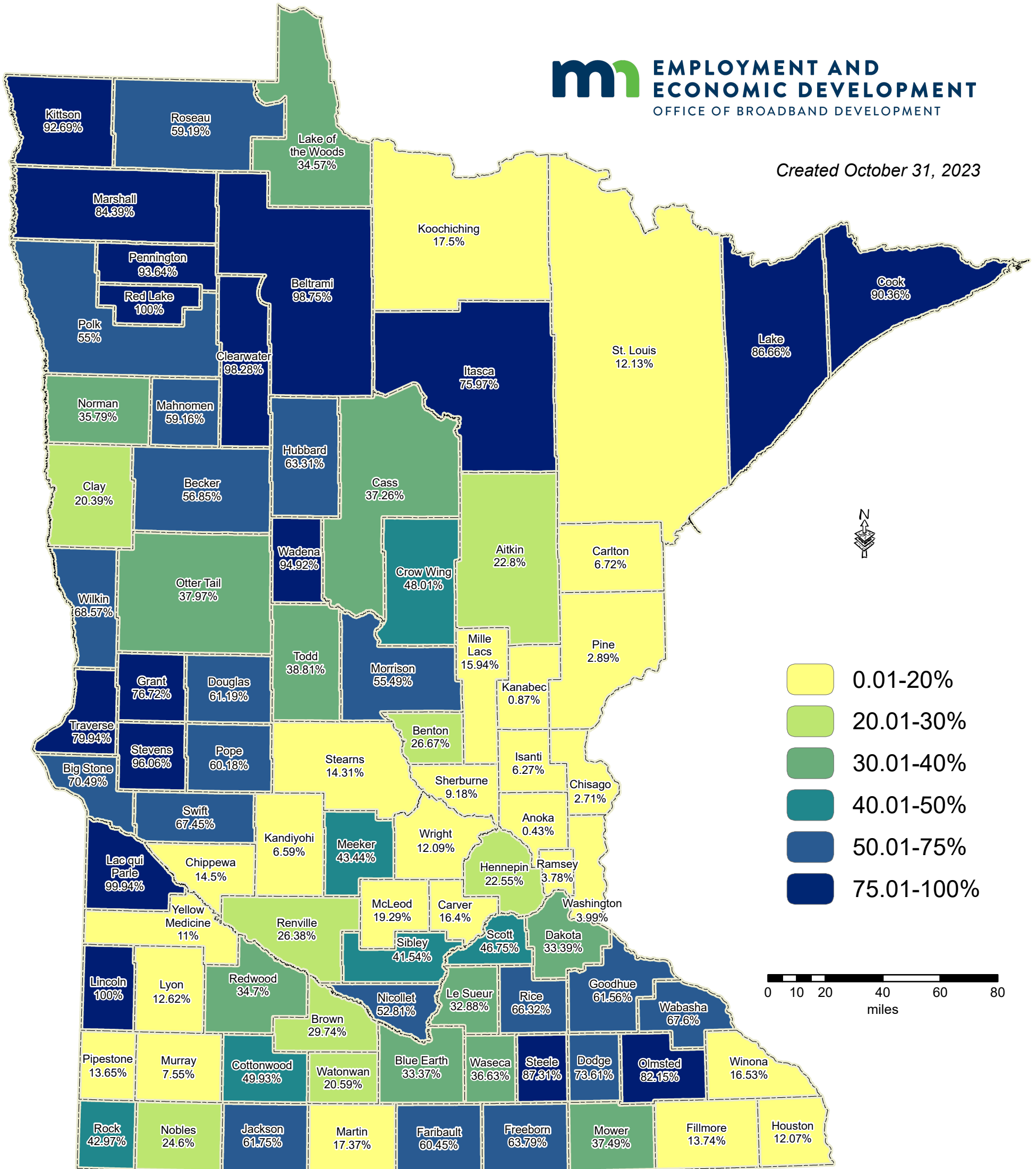
2023 Broadband Availability in the State of Minnesota

Percentage of Residential Locations Served by Wireline Broadband Service by County

At Least 1 Gbps Download/1 Gbps Upload Speeds
 Statewide Availability: 28.75%, Rural: 38.97%

mn EMPLOYMENT AND ECONOMIC DEVELOPMENT
 OFFICE OF BROADBAND DEVELOPMENT

Created October 31, 2023



This map was prepared by Connected Nation under contract with the Minnesota Department of Employment and Economic Development. The map represents areas of broadband service availability based on provider data submitted to and analyzed by Connected Nation. This release reflects updates received as of October 2023.

Residential locations are based on classifications from the FCC Fabric Version 3.2. Classified as either Residential or Mixed. Fabric location data provided by CostQuest Associates, Inc., all rights reserved.

Additional maps and data are available at <http://mn.gov/deed/programs-services/broadband/maps>

Upon request, this information can be made available in alternate formats for people with disabilities by contacting the DEED Office of Broadband Development at 651-259-7610.

Submit questions or recommended changes to: DEED.broadband@state.mn.us

© Copyright 2023, State of Minnesota, St. Paul, MN